

IDC4 software update

OFF-HIGHWAY 11



TEXA

The **IDC4 OFF-HIGHWAY 11** update includes a large number of developments related to the diagnosis on agricultural vehicles such as tractors, lifters, unifeeds, threshers, but also on construction and earth moving equipment such as diggers, loaders, backhoes, dumpers, bulldozers and much more. It is a diagnostic equipment without comparisons, that increases day after day thanks to the constant work of TEXA's development teams that have the precise objective to make TEXA's tools as advanced as possible.

Below is a list that examines some of the new features available starting from this OFF-HIGHWAY, dedicated to the most important brands on the market divided into the categories AGRI, CONSTRUCTION and INDUSTRIAL ENGINES:

AGRI

- **CHALLENGER:** Tractors Series MT400B, MT500B, MT600B, MT700B, MT800B and MT900B with Caterpillar engine (Vehicle check-up, Diesel Injection and Transmission); Tractors Series MT400D, MT500D, MT600D, MT700D, MT600E, MT700E and MT800E with SISU Tier 4 engine (Diesel Injection);
- **CLAAS:** Tractors Series Arion 400, General diagnosis; Lexion combine harvesters with Caterpillar engine (Diesel Injection);
- **JAGUAR:** Shredders with MAN V8 (Diesel Injection);
- **CATERPILLAR:** Combine harvesters Series Lexion (Diesel Injection);
- **DEUTZ-FAHR:** Tractors Series 6, General diagnosis and Deutz Tier 4 engine;
- **JCB:** Tractors Series Fastrac, Diesel Injection and ABS according to JCB protocol;
- **KRONE:** Shredders Series Big-X with MAN V8 (Diesel Injection);
- **KUBOTA:** Tractors Series M60 and MGX with Tier 4 engine (Diesel Injection);
- **CNH:** Bosch EDC 7UC31 Diesel Injection line-K diagnosis; Denoxtronic 2: the selection "Special parameterisations" was added for the Engine restart counter reset function.

CONSTRUCTION

- **BOBCAT:** Skid steers Series T with Kubota Tier 4 engine (Diesel Injection);
- **CATERPILLAR:** Skid steers Series 2xxC, Vehicle check-up and Machine control module;
- **JLG:** Telescopic boom lifts Series G with Cummins engine (Diesel Injection);
- **JOHN DEERE:** Loaders Series J and K, Diggers Series D and G, Backhoes Series G, J and K, General diagnosis, Diesel Injection and Vehicle check-up;
- **KUBOTA:** Skid steers Series SVL with Tier 4 engine (Diesel Injection);
- **VOLVO:** Introduction of Special Parameterisations Engine Diagnosis with Injector Coding.
- **CNH:** Denoxtronic 2: the selection "Special parameterisations" was added for the Engine restart counter reset function.

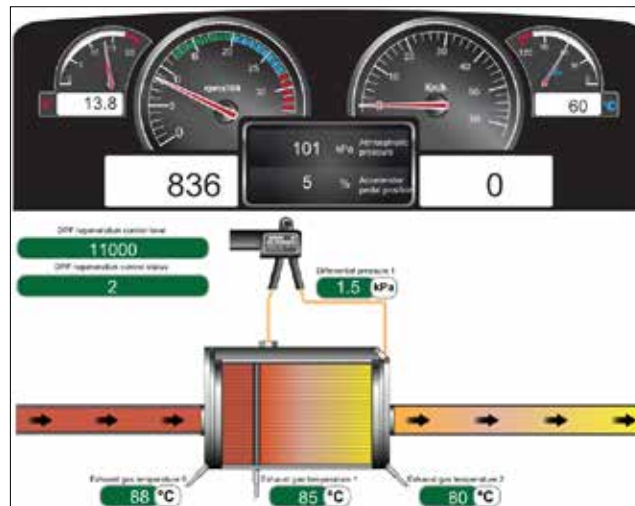
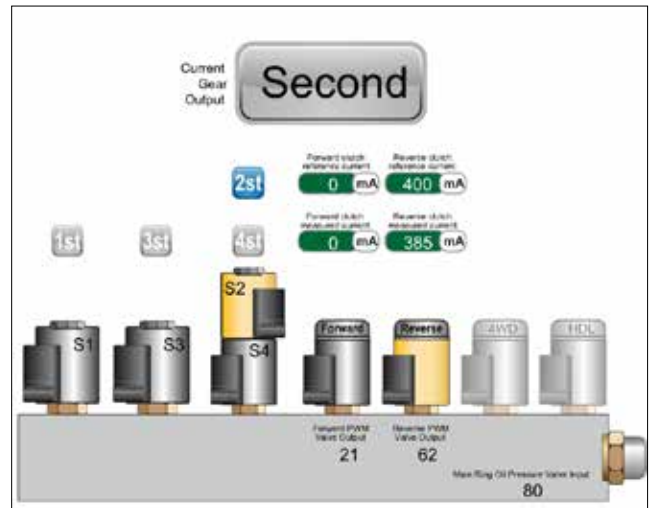
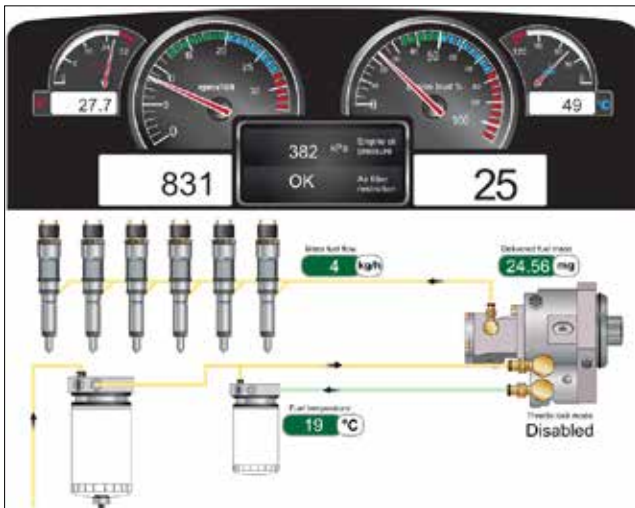
INDUSTRIAL ENGINES

- **FPT:** Bosch EDC 7UC31 Injection line-K Diagnosis;
- **KUBOTA:** Tier 4 Engine Diagnosis;
- **SISU:** Tier 4 Engine Diagnosis.

DASHBOARDS

The new DASHBOARDS included in this update are also very interesting as they allow and easier and intuitive understanding of how the systems in a vehicle work, thanks to a captivating graphic design and a dynamic display of the engineering parameters:

- **Kubota** Tier 4 Diesel Injection;
- **Caterpillar** Diesel Injection;
- **Carraro** Trax CE Transmission.



For further details on these functions and on their applicability to vehicles, visit: www.texa.com/coverage

EXTENDED COVERAGE OF MAKES

VERSION 11

AGRICULTURAL VEHICLES

| | | | | |
|-------------|--------------|-------------|-----------------|---------------------|
| BUHLER | DIECI | JLG | LAVERDA | NEW HOLLAND |
| CARRARO | ENERGREEN | JOHN DEERE | LINDNER | RENAULT AGRICULTURE |
| CASE IH | FARESIN | KAMAZ | MAC DON | ROPA |
| CATERPILLAR | FENDT | KRONE | MANITOU | SAME |
| CHALLENGER | FRANZ KLEINE | KUBOTA | MASSEY FERGUSON | STEYR |
| CLAAS | HURLIMANN | LAMBORGHINI | McCORMICK | URSUS |
| DEUTZ-FAHR | JCB | LANDINI | MERLO | VALTRA |

CONSTRUCTION

| | | | | |
|---------|------------------------|---------|-------------|--------|
| ASTRA | CATERPILLAR | KOBELCO | NEW HOLLAND | TEREX |
| BELL | FIAT-KOBELCO | KOMATSU | O&K | VOLVO |
| BOBCAT | HITACHI (FIAT-HITACHI) | KRAMER | PERLINI | XTREME |
| CARRARO | JCB | KUBOTA | PETTIBONE | |
| CASE | JOHN DEERE | MERLO | RANDON | |

CRANE TRUCK/CONTAINER TRUCK

| | | |
|-------------|----------|-------------|
| COMETTO | HYSTER | OTO |
| CVS FERRARI | KALMAR | TADANO FAUN |
| GROVE | LIEBHERR | TEREX |

INDUSTRIAL ENGINES

| | | | | |
|-------------|--------------------|---------------|---------|-------------|
| CATERPILLAR | FPT (IVECO MOTORS) | JOHN DEERE | NEF | SISU |
| CUMMINS | IVECO MOTORS | KUBOTA | PERKINS | VM MOTORI |
| DEUTZ | (AIFO) | MERCEDES-BENZ | SCANIA | VOLVO PENTA |

LEGEND

| | | | |
|--|---|---|--|
|  | Brands that offer updates in this version |  | Brands that do not offer updates in this version |
|--|---|---|--|

This document is strictly confidential. All copying, in part or in whole, is strictly forbidden without the prior authorisation of TEXA S.p.A. Future specifications, descriptions and appearances may vary with respect to this brochure. TEXA S.p.A. reserves the right to modify its products without prior notice.

WARNING

The trademarks and logos of vehicle manufacturers in this document have been used exclusively for information purposes and are used to clarify the compatibility of TEXA products with the models of vehicles identified by the trademarks and logos. Because TEXA products and software are subject to continuous developments and updates, upon reading this document they may not be able to carry out the DIAGNOSTICS of all the models and electronic systems of each vehicle manufacturer mentioned within this document. References to the makes, models and electronic systems within this document must therefore be considered purely indicative and TEXA recommends to always check the list of the "Systems that can be diagnosed" of the product and/or software at TEXA authorized retailers before any purchase. **The images and the vehicle outlines within this document have been included for the sole purpose of making it easier to identify the vehicle category (car, truck, motorbike, etc.) for which the TEXA product and/or software is intended.** The data, descriptions and illustrations may change compared to those described in this document. TEXA S.p.A. reserves the right to make changes to its products without prior notice.



+39 0422 791311



www.texa.com



info.it@texa.com



www.facebook.com/texacom



www.twitter.com/texacom



www.youtube.com/texacom

TEXA

COMPANY WITH
QUALITY SYSTEM
CERTIFIED BY DNV
= ISO 9001 =

The BLUETOOTH brand is the property of Bluetooth SIG, Inc., U.S.A., and is used by TEXA S.p.A. under license.

Copyright TEXA S.p.A. - 10/2014 - Inglese

MADE IN ITALY

